

Technical Data Sheet

Tender Mooring Whips + spinlock

The mooring whips set consists of two whip poles, equipped with two mooring lines and spinlock, (each pole is made up of two sections for easier portability and storage), as well as a canvas pole bag with a zipper.



Part Number	YF.101	YF.102	YF.103
Total Length	4.2m	4.8m	5.2m
Base Pole Length	2.20m	2.20m	2.20m
Top Pole Length	2m	2.60m	3m
Per Tender Length	up to 6m	from 6m to 10m	from 10m to 14m
Per Tender Weight	up to 20'	21' up to 33'	34' up to 46'

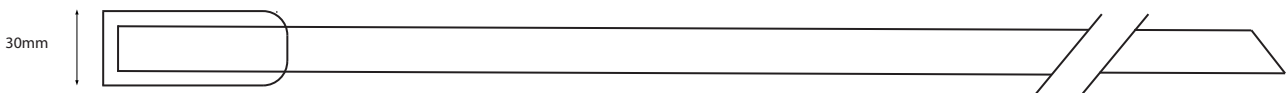
Technical Data Sheet

Tender Mooring Whips + spinlock

Fiberglass tube with a white paint coating and a transparent finish

- POM-C (Acetal Resin) base sleeves to fit most mount bases, Ø 30mm
- All metal parts are stainless steel
- 10 Mt Gleistein Whip lines, with core 12-strand braid of Dyneema®
- Spinlock PXR Cam Cleat
- Spinlock and pulley attachment plate in 3K Torayca™ carbon fiber
- Proudly made in Italy, designed to ensure top performance and durability

Base Pole (Ø 30 mm)



Top Pole (Ø 17 mm)



Spinlock PXR cam

- Fast precise control for hand tensioned lines
- Roller action ensures easy release under high load
- Hard anodised alloy cam and base
- Ideal for high performance lines
- Micro size for small diameters
- Three stage release control switch
- Resists accidental re-cleating